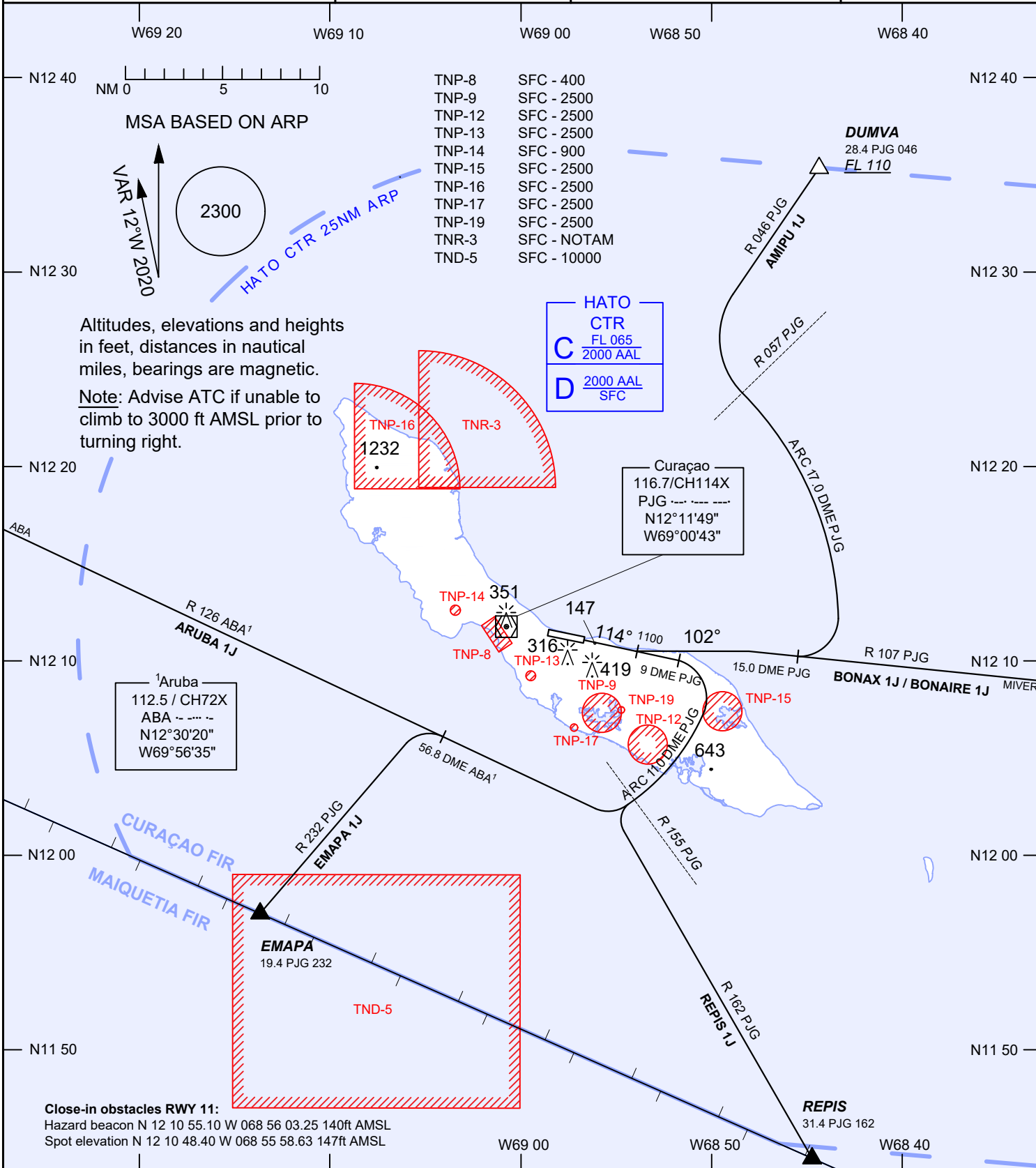


AIP DUTCH CARIBBEAN

STANDARD DEPARTURE CHART INSTRUMENT (VOR) - ICAO	AD ELEVATION: 36	CURAÇAO CTRL 124.1/127.1	RWY 11
	TRANS LEVEL: FL 040	CURAÇAO TRACON 119.8	AEROPUERTO HATO
	TRANS ALT: 2500 (2464)	HATO TWR 118.3	(TNCC), CURAÇAO
		HATO ATIS 132.6	



**AMIPU 1J**  
Climb on runway magnetic track 114°, at or above 1100 ft AMSL turn left to magnetic track 102° to intercept and follow R 107 PJG. At 15.0 DME PJG turn left to proceed on arc 17.0 DME PJG to R 057 PJG. Turn right to intercept and follow R 046 PJG to DUMVA (28.4 DME PJG) at or above FL 110. After passing DUMVA, expect ATC instructions to first en-route waypoint. Requires minimum 225 ft/NM up to 1100 ft AMSL.

**ARUBA 1J**  
Climb on runway magnetic track 114° direct to cross 9.0 DME PJG at or above 3000 ft AMSL. Turn right to proceed on arc 11.0 DME PJG to R 155 PJG. Turn right to intercept and follow R 126 ABA to ABA VOR/DME. Requires minimum 225 ft/NM up to 1100 ft AMSL.

**BONAIRE 1J**  
Climb on runway magnetic track 114°, at or above 1100 ft AMSL turn left to magnetic track 102° to intercept and follow R 107 PJG to MIVER (37.1 DME PJG).

**BONAX 1J**  
Climb on runway magnetic track 114°, at or above 1100 ft AMSL turn left to magnetic track 102° to intercept and follow R 107 PJG to MIVER (37.1 DME PJG). Cross MIVER at or above 6000 ft AMSL and continue on R 107 PJG to BONAX (69.8 DME PJG).

**EMAPA 1J**  
Climb on runway magnetic track 114° direct to cross 9.0 DME PJG at or above 3000 ft AMSL. Turn right to proceed on arc 11.0 DME PJG to R 155 PJG. Turn right to follow R 126 ABA up to 56.8 DME ABA. Turn left to intercept and follow R 232 PJG to EMAPA (19.4 DME PJG). Requires minimum 225 ft/NM up to 1100 ft AMSL.

**REPIS 1J**  
Climb on runway magnetic track 114° direct to cross 9.0 DME PJG at or above 3000 ft AMSL. Turn right to proceed on arc 11.0 DME PJG to R 155 PJG. Turn left to intercept and follow R 162 PJG to REPIS (31.4 DME PJG). Requires minimum 225 ft/NM up to 1100 ft AMSL.